

SINGER

258

SINGER*
SINGER FACTORY - MONZA

List of Parts

For Sewing Machine of the Class

258

The Singer Company
© 1972 Singer Monza
All rights reserved

* Registered Trademark

Printed in Italy

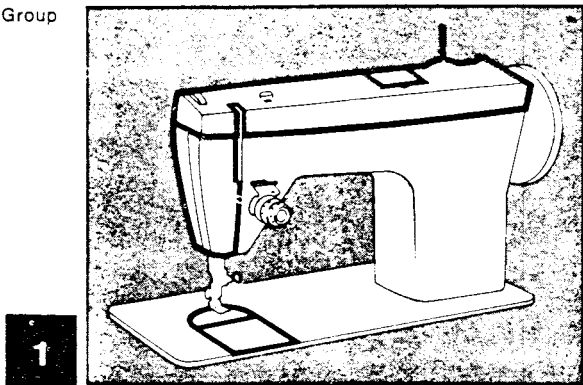
Contents

Group

Page

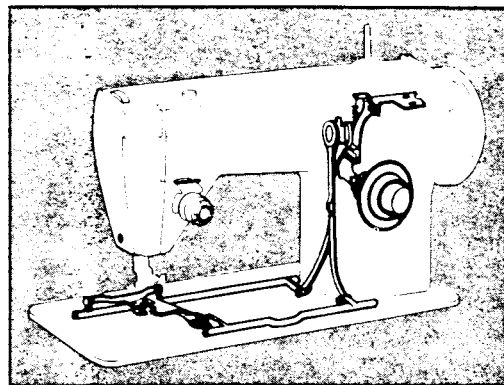
Group

Page



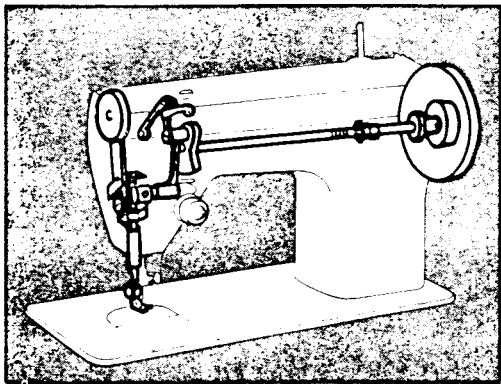
1

4



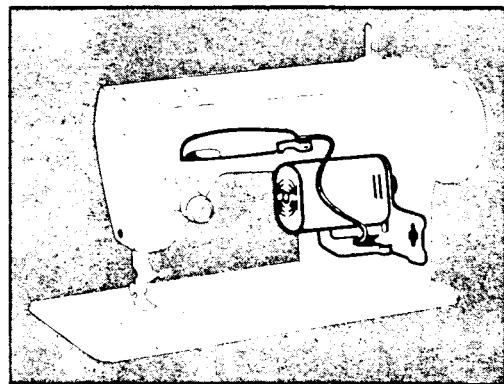
5

12



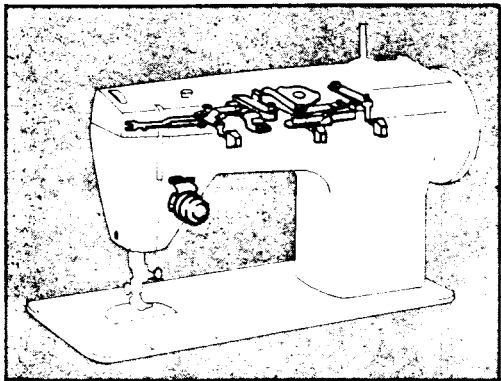
2

6



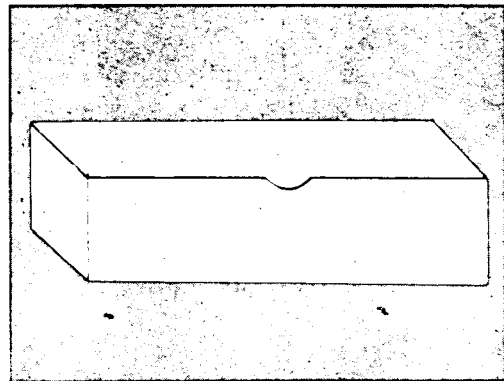
6

14



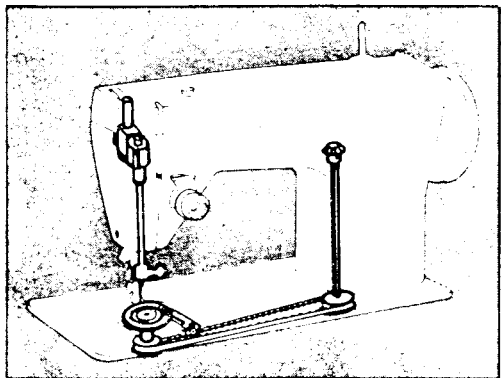
3

8



7

16



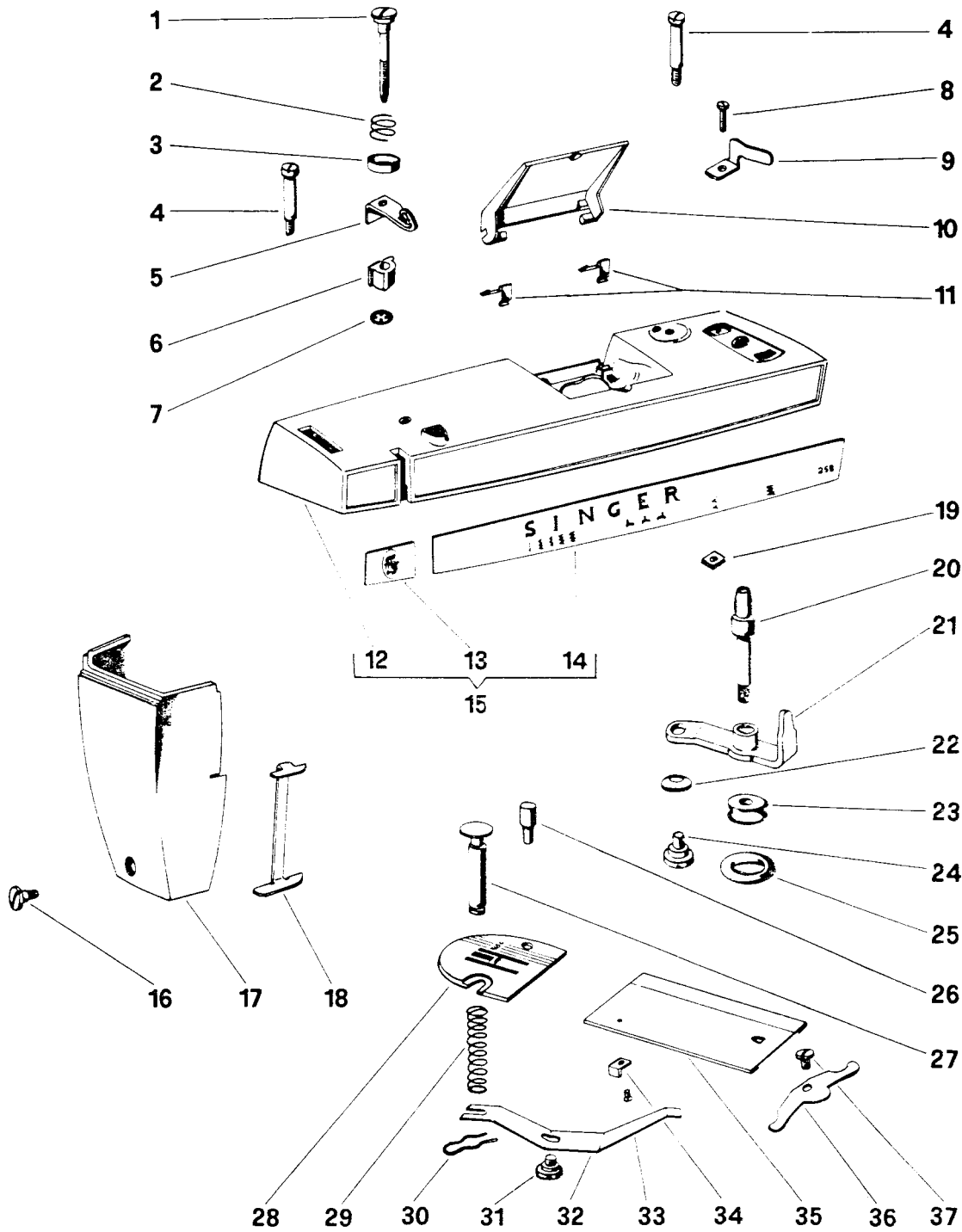
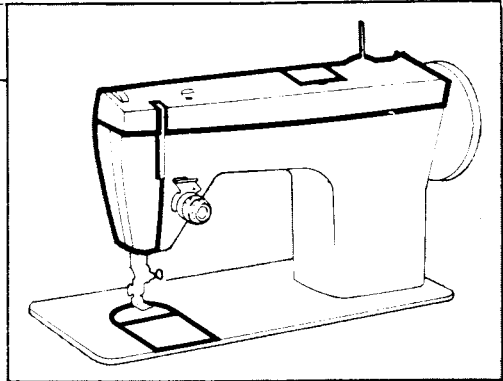
4

10

8

High Usage Parts

19

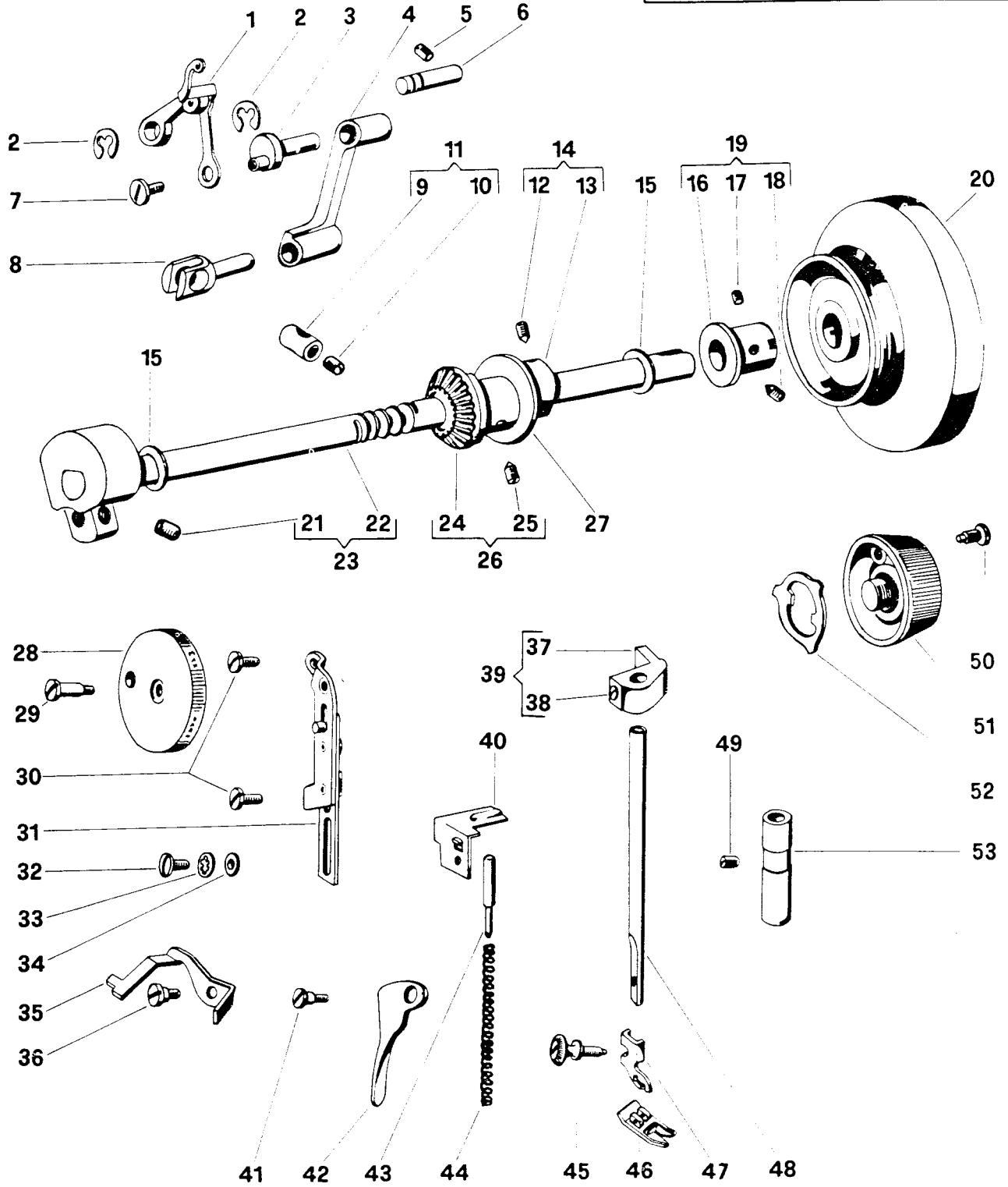
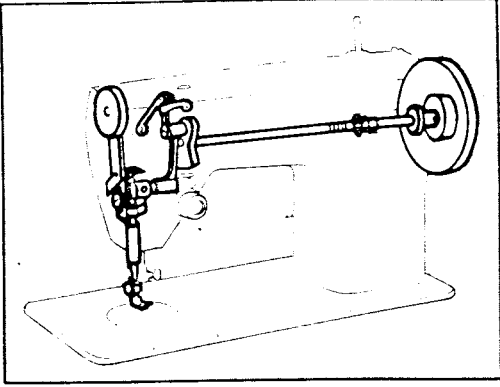


From the library of: Diamond Needle Corp

List of Parts for 258 Machine Class

| Nº | Part Nº | Part Description |
|----|-------------|---|
| 1 | 44751 | Bobbin Winder Tension Stud |
| 2 | 45847 | Bobbin Winder Tension Disc Spring |
| 3 | 45915 | Bobbin Winder Tension Disc |
| 4 | 141788-892 | Arm Top Cover Screws |
| 5 | 319717-900 | Bobbin Winder Tension Bracket & Thread Guide |
| 6 | 44770-408 | Bobbin Winder Tension Bracket Spacer |
| 7 | 44447 | Bobbin Winder Tension Stud Retaining Ring |
| 8 | 141808-891 | Bobbin Winder Stop Screw |
| 9 | 44365 | Bobbin Winder Stop |
| 10 | ✓319743-451 | Arm Top Cover Lid (Plastic) |
| 11 | ✓319744 | Arm Top Cover Lid Spring |
| 12 | ✓319740-901 | Arm Top Cover Compl., 319740-900 with 44745-900 and 44773-900 |
| 13 | ✓37253-904 | Arm Top Cover Medallion Compl., 44719-904 with 44801-900 |
| 14 | ✓319745-900 | Control Panel |
| 15 | ✓319741-451 | Arm Top Cover Compl. 319740-901 with 37253-904 and 319745-900 (for Agents only) |
| 16 | 141787-892 | Face Plate Screw |
| 17 | 37279-408 | Face Plate (Plastic) |
| 18 | 44899 | Face Plate Thread Guard |
| 19 | 53640-819 | Bobbin Winder Stop Screw Nut |
| 20 | 319738 | Bobbin Winder Spindle Compl., 38000-900 with 20477-997 and 319739-900 |
| 21 | 44861 | Bobbin Winder Lever, 44860-900 with 37999-900 |
| 22 | 352026 | Bobbin Winder Lever Hinge Screw Washer |
| 23 | 44440 | Bobbin Winder Pulley (Plastic) |
| 24 | 141947-819 | Bobbin Winder Lever Hinge Screw |
| 25 | 15287-701 | Bobbin Winder Friction Ring |
| 26 | 44808 | Throat Plate Position Pin |
| 27 | 102840 | Throat Plate Clamp |
| 28 | 37996 | Throat Plate for Zig-Zag Sewing |
| 29 | 179657 | Throat Plate Clamp Spring |
| 30 | 179758 | Throat Plate Clamp Spring Retaining Spring |
| 31 | 141947 | Throat Plate Clamp Releasing Lever Screw |
| 32 | 44517 | Throat Plate Clamp Releasing Lever |
| 33 | 1172-806 | Throat Plate Clamp Releasing Lever Actuator Screw |
| 34 | 44518 | Throat Plate Clamp Releasing Lever Actuator |
| 35 | 44516 | Bed Slide |
| 36 | ✓37239-819 | Bed Slide Spring |
| 37 | 141848-819 | Bed Slide Spring Screw |

From the library of: Diamond Needle Corp

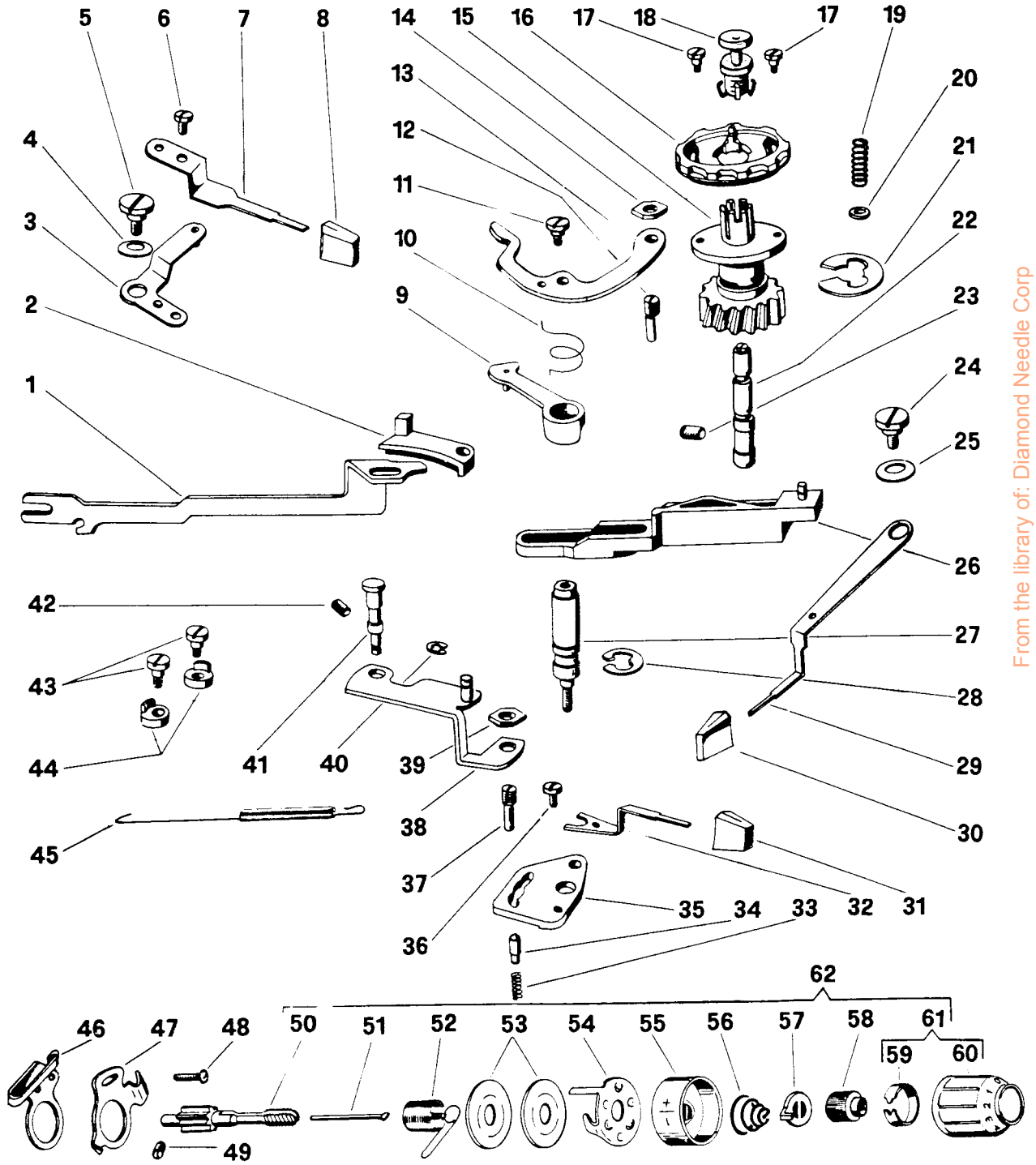
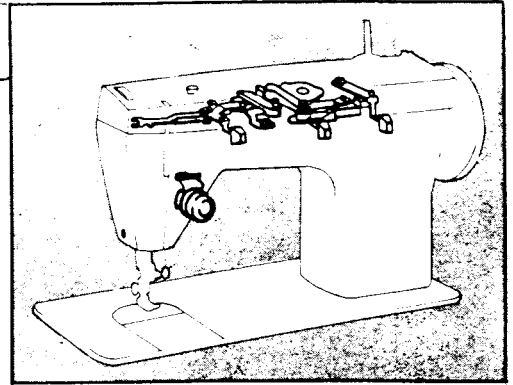


From the library of: Diamond Needle Corp

List of Parts for 258 Machine Class

| N ^o | Part N ^o | Part Description |
|----------------|---------------------|---|
| 1 | 319860 | Thread Take-up Lever Compl. 319862-900 with 44426-900 and 319859-900 |
| 2 | 44472 | Thread Take-up Lever Link Hinge Stud Retaining Ring (Left & Right) |
| 3 | 319825 | Thread Take-up Crank |
| 4 | 44752 | Needle Bar Connecting Link |
| 5 | 141938-833 | Thread Take-up Lever Link Hinge Stud Set Screw |
| 6 | 44421 | Thread Take-up Lever Link Hinge Stud |
| 7 | 141809-805 | Thread Take-up Lever Cap Screw |
| 8 | 37930 | Needle Bar Connecting Stud |
| 9 | 37931 | Needle Bar Connecting Stud Hinge |
| 10 | 141916-833 | Needle Bar Clamping Screw |
| 11 | 37932 | Needle Bar Connecting Stud Hinge Pin Compl. 37931 with 141916-833 |
| 12 | 141918-833 | Feed Cam Set Screw |
| 13 | ✓ 37281-901 | Feed Cam |
| 14 | 37281 | Feed Cam Compl: (37281-901 with 141918) |
| 15 | 319764 | Clamp Stop Motion Flanged Bushing and Needle Bar Crank Washers (Plastic) |
| 16 | 44422-901 | Clamp Stop Motion Flanged Bushing |
| 17 | 141916-833 | Clamp Stop Motion Flanged Bushing Set Screw |
| 18 | 141915-833 | Clamp Stop Motion Flanged Bushing Positioning Screw |
| 19 | 44679-650 | Clamp Stop Motion Flanged Bushing Compl. 44422-901 with 141915 and 141916 |
| 20 | 44463-408 | Hand Wheel |
| 21 | 354105-833 | Thread Take-up Crank Set Screw |
| 22 | ✓ 37228-900 | Arm Shaft (Horizontal) |
| | ✓ 44399-900 | Arm Shaft (Horizontal) |
| 23 | 44374 | Arm Shaft (Horizontal) Compl. 37228-900 with 44396-901 and 354105-833 |
| 24 | 44455-900 | Arm-Shaft (Horizontal) Bevel Gear (Plastic) & Feed Lifting (Eccentric) |
| 25 | 141918-833 | Arm Shaft (Horizontal) Bevel Gear (Plastic) & Feed Lifting Eccentric Set Screw |
| 26 | 37229 | Arm Shaft (Horizontal) Bevel Gear (Plastic) & Feed Lifting Eccentric Compl. 44455-900 with 141918 |
| 27 | 37284 | Feed Forked Connection Retaining Washer |
| 28 | ✓ 44841-408 | Presser Bar Pressure Regulating Knob |
| 29 | 141941-819 | Presser Bar Pressure Regulating Knob Screw |
| 30 | 141913-819 | Presser Bar Pressure Regulating Knob Bracket Screws |
| 31 | 319804 | Presser Bar Pressure Regulating Knob Bracket Compl. 319803-900 with 37966-900 and 37962 |
| 32 | 141848-819 | Presser Bar Spring Adjusting Bracket Screw |
| 33 | 44467 | Presser Bar Spring Adjusting Bracket Screw Lock Washer |
| 34 | 37969 | Presser Bar Spring Adjusting Bracket Screw Washer |
| 35 | ✓ 37985-900 | Tension Releasing Lever |
| 36 | 141786-803 | Tension Releasing Lever Hinge Screw |
| 37 | ✓ 44443-901 | Presser Bar Guide Bracket |
| 38 | 141925-833 | Presser Bar Guide Bracket Set Screw |
| 39 | 44444 | Presser Bar Guide Bracket Compl. 44443-901 with 141925-833 |
| 40 | 37968 | Presser Bar Spring Adjusting Bracket |
| 41 | 141846-803 | Presser Bar Lifter Hinge Screw |
| 42 | 44445 | Presser Bar Lifter |
| 43 | 37959 | Presser Bar Pressure Regulating Extension Pin |
| 44 | 44449 | Presser Bar Spring |
| 45 | 354135-451 | Presser Foot Thumb Screw |
| 46 | 155962 | Presser Foot Plate (Snap-on) for Zig-Zag Sewing Compl., 155961-901 with 102536-900 |
| 47 | 155964 | Presser Foot Shank (Snap-on) |
| 48 | 319758 | Presser Bar (Hollow) |
| 49 | 141803-830 | Presser Bar Bushing Set Screw |
| 50 | 141914-892 | Clamp Stop Motion Clamp Stop Screw |
| 51 | 44468-408 | Clamp Stop Motion Clamp Screw (Plastic) Compl. 44469-900 with 44502-900 |
| 52 | 44464 | Clamp Stop Motion Clamp Washer |
| 53 | 37958 | Presser Bar Bushing |

From the library of: Diamond Needle Corp

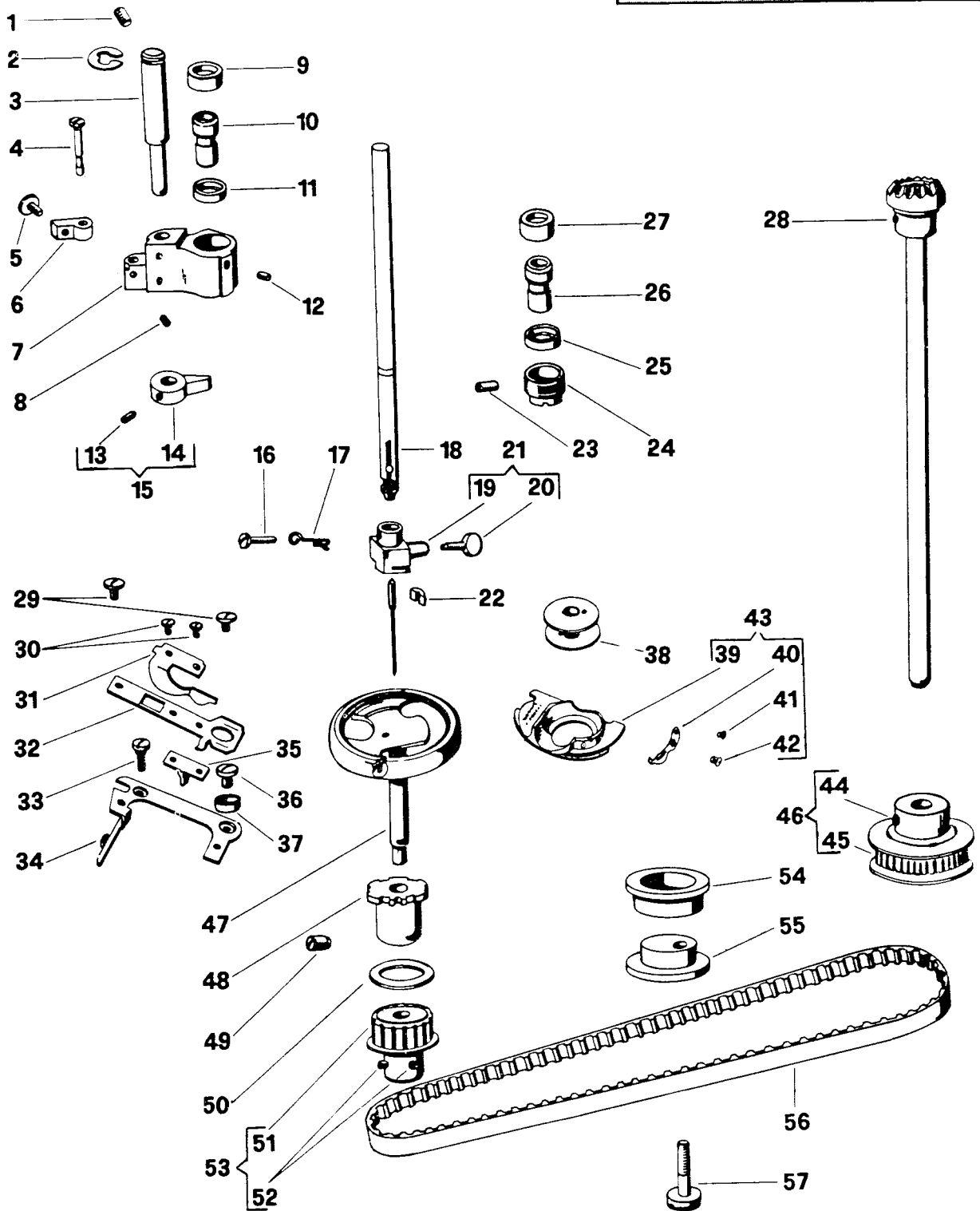
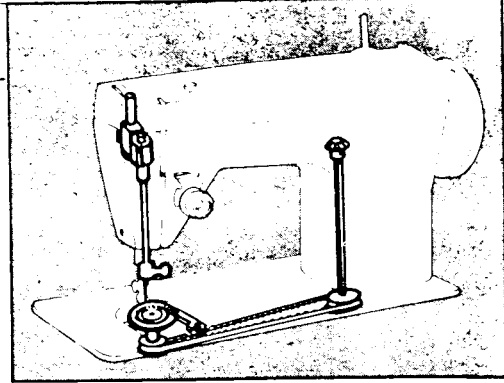


From the library of: Diamond Needle Corp

List of Parts for 258 Machine Class

| Nº | Part Nº | Part Description |
|----|------------|--|
| 1 | 37933 | Needle Bar Driving Arm |
| 2 | 37937 | Needle Bar Driving Arm Slide |
| 3 | 44828 | Bight Amplitude Control Lever Link Compl. 44827-900 with 37247-900 |
| 4 | 49204 | Disc Selector Lever Hinge Screw Friction Washer |
| 5 | 141786-803 | Bight Amplitude Control Lever Link Hinge Screw |
| 6 | 141913-819 | Bight Amplitude Control Lever Screw |
| 7 | ✓37240-900 | Bight Amplitude Control Lever |
| 8 | 319722-901 | Bight Amplitude Control Lever Knob Color Code No. 408 |
| 9 | ✓446610 | Disc Follower Compl. 37262 wit pin 446609-900 |
| 10 | 44419 | Disc Follower Positioning Spring |
| 11 | 141787-803 | Disc Follower Stud Screw |
| 12 | 44471 | Needle Position Selector Lever Bracket Follower Screw Stud (Eccentric) |
| 13 | ✓319746 | Disc Follower Disengaging Lever |
| 14 | 53641-819 | Disc Follower Disengaging Lever Adjusting Screw Stud (Eccentric) Nut |
| 15 | ✓319685 | Disc Driving Gear Compl. 319684-900 with 44813 |
| 16 | ✓319694 | Disc (Plastic) For Zig-Zag Stitch |
| 17 | 141807-819 | Disc Spacer Positioning Screws |
| 18 | ✓319682 | Disc Releasing Stud Compl. 319678-900 with 319680-900, 319681-900 and 319881 |
| 19 | ✓319679 | Disc Releasing Stud Spring |
| 20 | ✓319775 | Disc Releasing Stud Spring Washer |
| 21 | 44730 | Disc Driving Gear Retaining Ring |
| 22 | ✓37261 | Disc Driving Gear Shaft |
| 23 | 141938-833 | Disc Driving Gear Shaft Set Screw |
| 24 | 141786-803 | Disc Selector Lever Hinge Screw |
| 25 | 49204 | Disc Selector Lever Hinge Friction Washer |
| 26 | 44721 | Disc Selector Lever Hinge (Plastic) |
| 27 | ✓37268 | Disc Follower Stud |
| 28 | 44371 | Disc Follower Stud Retaining Ring |
| 29 | ✓37277-900 | Disc Selector Lever |
| 30 | 319722-901 | Disc Selector Lever Knob Color Code No. 408 |
| 31 | 319722-901 | Needle Position Selector Lever Knob (Color Code No. 408) |
| 32 | ✓37951-900 | Needle Position Selector Lever |
| 33 | 37956 | Needle Position Selector Lever Bracket Positioning Spring |
| 34 | 37955 | Needle Position Selector Lever Bracket Positioning Pin |
| 35 | 37953 | Needle Position Selector Lever Bracket |
| 36 | 141913-819 | Needle Position Selector Lever Screw |
| 37 | 44471 | Disc Follower Disengaging Lever Adjusting Screw Stud (Eccentric) |
| 38 | 319798 | Needle Bar Driving Arm Slide Bracket Compl. 319797-900 with 319799-900 |
| 39 | 53641-819 | Needle Position Selector Lever Bracket Follower Screw Stud (Eccentric) Nut |
| 40 | 44477 | Needle Bar Driving Arm Slide Retaining Ring |
| 41 | 37941 | Needle Bar Driving Arm Slide Bracket Hinge Stud |
| 42 | 141938 | Disc Driving Gear Shaft Set Screw |
| 43 | 141787-803 | Bight Amplitude Control Lever Link Stop Screws |
| 44 | 37248 | Bight Amplitude Control Lever Link Stops (Plastic) |
| 45 | 37942 | Needle Bar Driving Arm Tension Spring |
| 46 | ✓37990 | Thread Guide (Upper) |
| 47 | 44392 | Slack Thread Regulator & Tension Thread Guide |
| 48 | 141920 | Slack Thread Regulator & Tension Thread Guide & Thread Guide (Upper) Screw |
| 49 | 141803-830 | Tension Stud Set Screw |
| 50 | 44454 | Tension Stud Compl. 44453-900 with 81480-900 |
| 51 | ✓37986 | Tension Releasing Pin |
| 52 | 66774-002 | Thread Take-up Spring |
| 53 | 2102 | Tension Discs |
| 54 | 45343 | Thread Take-up Spring Thread Guard |
| 55 | 37987-408 | Tension Spring Cup (Plastic) |
| 56 | 125314 | Tension Spring |
| 57 | 37984 | Tension Stop Washer |
| 58 | 507405 | Tension Indicator Adaptor |
| 59 | 319773 | Tension Indicator Compression Ring |
| 60 | ✓37946-901 | Tension Indicator |
| 61 | 37979-408 | Tension indicator Compl. 37946-901 with 319773 |
| 62 | ✓37988-400 | Thread Tension Regulator Compl. 44454 with 37986 - 66774-002 - 2102 - 45343 - 37987-408 125314 - 37984 - 507405 and 37979-408 |

From the library of: Diamond Needle Corp

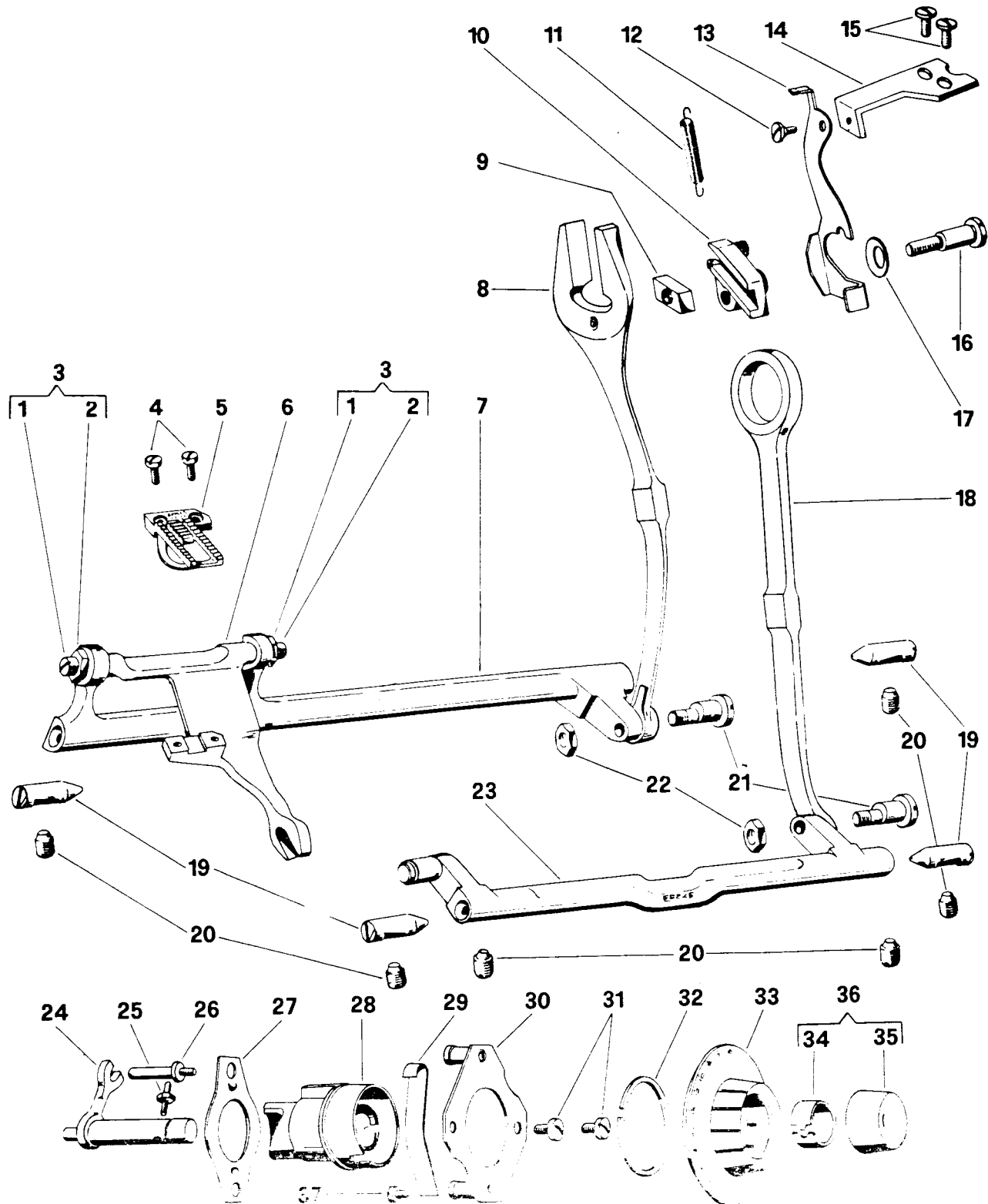
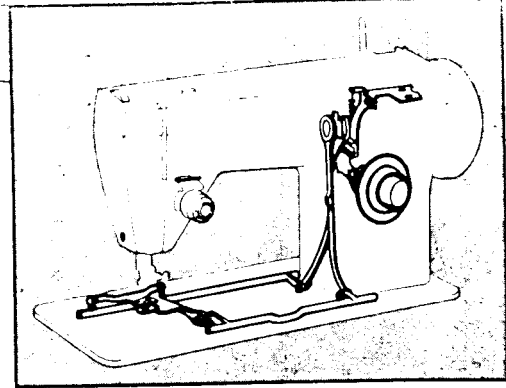


From the library of: Diamond Needle Corp

List of Parts for 258 Machine Class

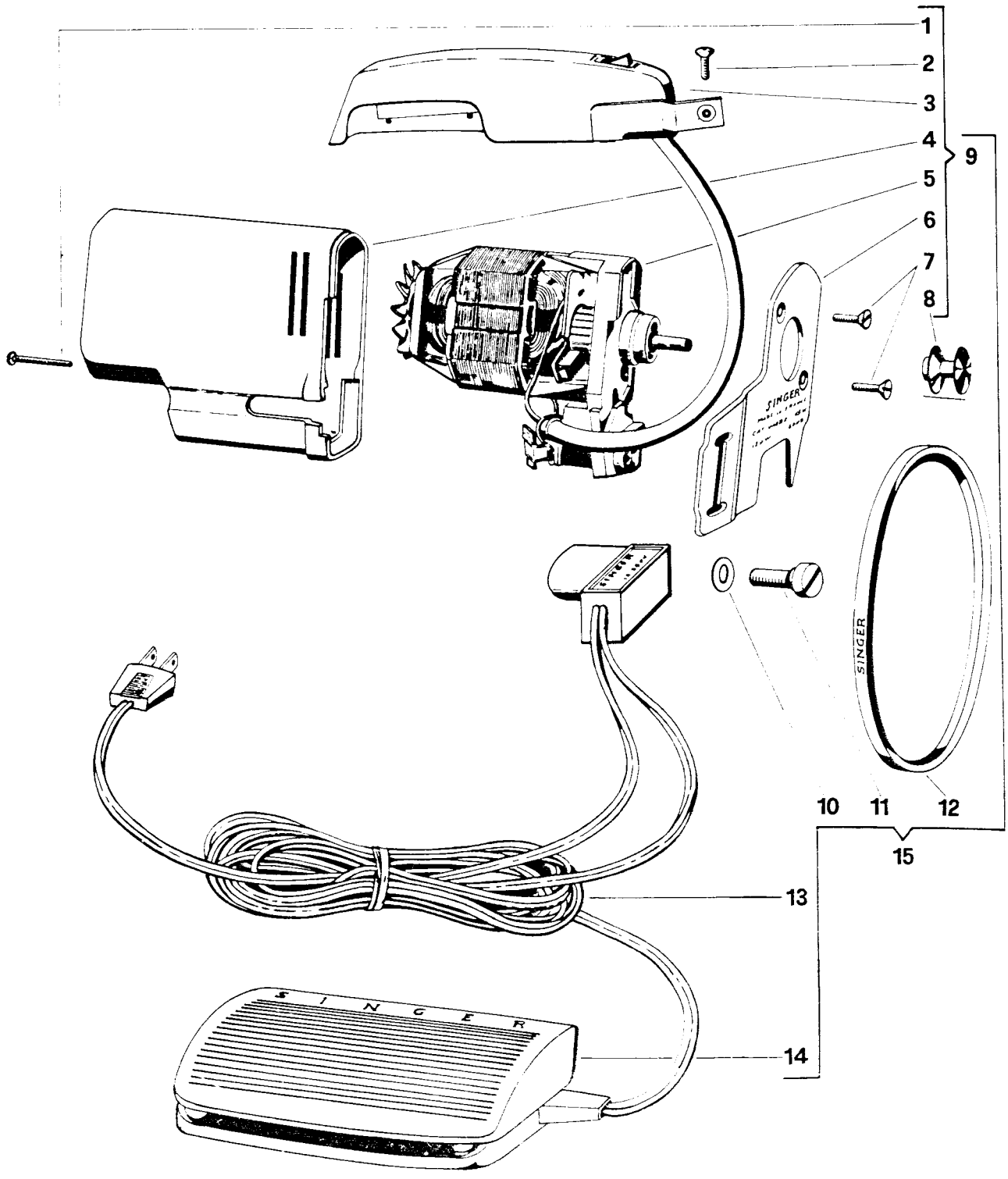
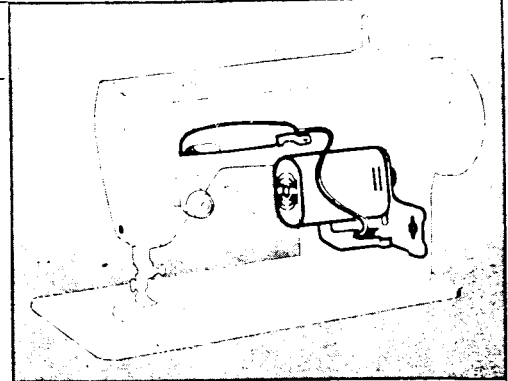
| Nº | Part Nº | Part Description |
|----|--------------|--|
| 1 | 141803-830 | Needle Bar Vibrating Bracket Hinge Pin (Eccentric) Set Screw |
| 2 | 44371 | Needle Bar Vibrating Bracket Hinge Pin (Eccentric) Retaining Ring |
| 3 | 44684 | Needle Bar Vibrating Bracket Hinge Pin (Eccentric) |
| 4 | 37935 | Needle Bar Driving Arm Hinge Bracket Hinge Pin |
| 5 | 141844-819 | Needle Bar Driving Arm Hinge Bracket Hinge Pin Screw |
| 6 | 37934 | Needle Bar Driving Arm Hinge Bracket |
| 7 | 37944 | Needle Bar Vibrating Bracket |
| 8 | 141940-833 | Needle Bar Driving Arm Hinge Bracket Hinge Pin Set Screw |
| 9 | ✓ 37928 | Needle Bar Ball Bushing (Upper) Adjusting Collar |
| 10 | 37927 | Needle Bar Ball Bushing (Upper) |
| 11 | 507379 | Needle Bar Ball Bushing (Upper) Socket |
| 12 | ✓ 141803 | Needle Bar Ball Bushing (Upper) Adjusting Collar Set Screw |
| 13 | ✓ 141940 | Needle Bar Vibrating Bracket Hinge Pin (Eccentric) Collar Set Screw |
| 14 | ✓ 37947-901 | Needle Bar Vibrating Bracket Hinge Pin (Eccentric) Collar |
| 15 | 44673 | Needle Bar Vibrating Bracket Hinge Pin (Eccentric) Collar Compl. 37947-901 with 141940 |
| 16 | 141808-892 | Needle Clamp Body Needle Clamp Thread Guide & Needle Stop Screw |
| 17 | 319721 | Needle Clamp Thread Guide |
| 18 | 37926 | Needle Bar |
| 19 | 319728 | Needle Clamp Body |
| 20 | 511171-892 | Needle Thumb Screw |
| 21 | 319729 | Needle Clamp Compl. 319728 with 511171 |
| 22 | 37943 | Needle Bar Gib |
| 23 | ✓ 141803 | Needle Bar Ball Bushing (Lower) Adjusting Screw Set Screw |
| 24 | 44473 | Needle Bar Ball Bushing (Lower) Adjusting Screw |
| 25 | 507379 | Needle Bar Ball Bushing (Lower) Socket (Lower) |
| 26 | 37927 | Needle Bar Ball Bushing (Lower) |
| 27 | 44450 | Needle Bar Ball Bushing (Lower) Socket (Upper) |
| 28 | 37231 | Arm Shaft (Upright) Compl. 37230-900 with 44457-900 and 319755 |
| 29 | 354101-819 | Rotating Hook Bobbin Case Position Finger Locating Screws |
| 30 | 50202-833 | Rotating Hook Bobbin Case Cushion Spring Screws |
| 31 | 44717 | Rotating Hook Bobbin Case Cushion Spring |
| 32 | 153375 | Rotating Hook Bobbin Case Cushion Spring Bracket |
| 33 | 141346-850 | Rotating Hook Bobbin Case Cushion Spring Bracket Hinge Screw (Back) |
| 34 | 44511 | Rotating Hook Bobbin Case Position Finger |
| 35 | 155469 | Rotating Hook Bobbin Case Cushion Spring Bracket Plate |
| 36 | 141345-819 | Rotating Hook Bobbin Case Cushion Spring Adjusting Screw |
| 37 | 155464 | Rotating Hook Bobbin Case Cushion Spring Adjusting Screw Washer |
| 38 | 172336 | Rotating Hook Bobbin (Plastic) |
| 39 | 172082-007 | Rotating Hook Bobbin Case |
| 40 | 172202 | Rotating Hook Bobbin Case Tension Spring |
| 41 | 141030-830 | Rotating Hook Bobbin Case Tension Spring Screw |
| 42 | 1172-806 | Rotating Hook Bobbin Case Tension Regulating Screw |
| 43 | 153758 | Rotating Hook Bobbin Case Compl. 172082-007 with 172202-1172 and 141030 |
| 44 | ✓ 141803 | Arm Shaft (Upright) Belt Drive Pulley Set Screw |
| 45 | ✓ 37233-901 | Arm Shaft (Upright) Belt Drive Pulley 37233-900 Machined |
| 46 | 37234 | Arm Shaft (Upright) Belt Drive Pulley (37233-901 - 141803-830) |
| 47 | 44506 | Rotating Hook Compl. 37978-900 with 155473-900 |
| 48 | 44512 | Rotating Hook Washer |
| 49 | 141925-833 | Rotating Hook Flanged Bushing (Eccentric) Set Screw |
| 50 | 319751 | Rotating Hook Flanged Bushing (Eccentric) |
| 51 | ✓ 37973-902 | Rotating Hook Belt Drive Pulley Compl. 37972-900 with 37975-900 |
| 52 | ✓ 141803-900 | Rotating Hook Belt Drive Set Screw |
| 53 | 37974-001 | Rotating Hook Belt Drive Pulley (Compl. 37973-902 with 141803-830) |
| 54 | 44410 | Rotating Hook Driving Belt Tension Adjuster (Eccentric) Collar |
| 55 | 44409 | Rotating Hook Driving Belt Tension Adjuster (Eccentric) |
| 56 | 37977 | Rotating Hook Driving Belt (Rubber) |
| 57 | 141794-819 | Rotating Hook Driving Belt Tension Adjuster (Eccentric) Screw |

From the library of: Diamond Needle Corp



List of Parts for 253 Machine Class

| Nº | Part Nº | Part Description |
|----|------------|--|
| 1 | 141921-850 | Feed Bar Screw Centers |
| 2 | 53647-819 | Feed Bar Screw Center Nuts |
| 3 | 44505 | Feed Bar Screw Centers Compl., 141921 with 44505 |
| 4 | 141920-833 | Feed Dog Screws |
| 5 | 103188 | Feed Dog |
| 6 | 37280 | Feed Bar |
| 7 | ✓37915 | Feed Rock Shaft |
| 8 | 37283 | Feed Forked Connection Compl., 37282-901 with 44427-900 |
| 9 | 44437 | Feed Forked Connection Slide Block |
| 10 | 37290 | Feed Regulator Compl., 37289-901 with 37903-900 |
| 11 | 319777 | Feed Regulator Return Spring |
| 12 | 141830-803 | Feed Regulator Control Arm Hinge Screw |
| 13 | ✓37297 | Feed Regulator Control Arm |
| 14 | ✓37299 | Feed Regulator Control Arm Mounting Bracket |
| 15 | 141848 | Feed Regulator Control Arm Mounting Bracket Screws |
| 16 | ✓41799-850 | Feed Regulator Hinge Screw |
| 17 | 44438 | Feed Regulator Hinge Screw Friction Washer |
| 18 | 37288 | Feed Lifting Rock Shaft Connecting Rod |
| 19 | 37287 | Feed Lifting Rock Shaft Centers |
| | 37287 | Feed Rock Shaft Centers |
| 20 | 141925-833 | Feed Rock Shaft Centers Set Screws |
| | 141925-833 | Feed Lifting Rock Shaft Centers Set Screws |
| | 141925-833 | Machine Hinge Connection Set Screws |
| 21 | 141805-850 | Feed Forked Connection Hinge Screw (Eccentric) |
| | 141805-850 | Feed Lifting Rock Shaft Connecting Rod Hinge Screw (Eccentric) |
| 22 | 53648-819 | Feed Forked Connection Hinge Screw (Eccentric) Nut |
| | 53648-819 | Feed Lifting Rock Shaft Connecting Rod Hinge Screw (Eccentric) Nut |
| 23 | 37286 | Feed Lifting Rock Shaft Compl., 37285-901 with 44428-900 and 44429 |
| 24 | 37909 | Feed Regulator Positioning Pin Compl., 37908-900 with 37293-900 |
| 25 | ✓44872 | Reverse Feed Cam Follower (Stud) |
| 26 | ✓44465 | Feed Regulator Positioning Pin |
| 27 | ✓37295 | Feed Regulator Cam Mounting Plate |
| 28 | 37291 | Feed Regulator Cam (Plastic, with Insert) |
| 29 | ✓44420 | Feed Regulator Cam Friction Spring |
| 30 | 37906 | Feed Regulator Mechanism Mounting Plate Compl. |
| 31 | 141848-819 | Feed Regulator Mounting Plate Screws |
| 32 | ✓37300 | Feed Regulator Control Dial Spring |
| 33 | ✓37901-902 | Feed Regulator Control Dial |
| 34 | 319773 | Feed Regulator Positioning Pin Knob Compression Ring |
| 35 | ✓37910-900 | Feed Regulator Positioning Pin Knob (Plastic) Color Code N. 408 |
| 36 | 44618-408 | Feed Regulator Positioning Pin Knob Compl., 37910-900 with 319773 |
| 37 | 141844 | Feed Regulator Cam Mounting Plate Screw |

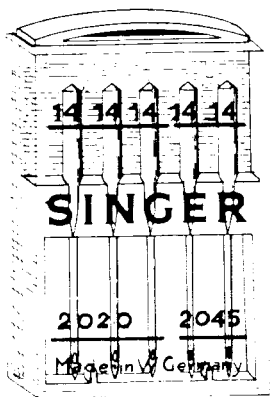


From the library of: Diamond Needle Corp

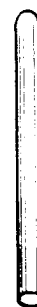
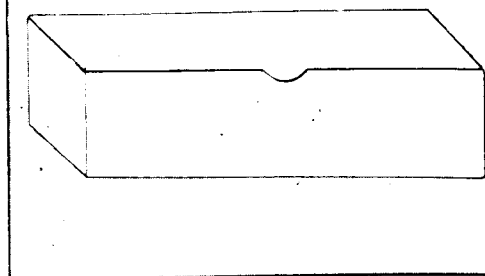
List of Electrical Parts for 258 Machine Class

6

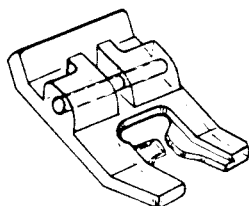
| N ^o | Part N ^o | Part Description |
|----------------|---------------------|---|
| 1 | ✓604016-000 | Dust Cover Screws |
| 2 | 691 | Light Mounting Screw |
| 3 | 603938-001 | Light L 11 (UL) |
| | ✓603938-002 | Light L 11 (STD) |
| 4 | ✓604048-000 | Dust Cover |
| 5 | 603912-001 | Module Motor WAB 2,8 UL |
| | 604053-001 | Module Motor WAB 2,8 STD |
| | 604053-002 | Module Motor WAB 2,11; 220 |
| | ✓604053-003 | Module Motor WAB 2,11; 240 |
| 6 | ✓604015-000 | Motor Mounting Bracket |
| 7 | ✓614019-000 | Motor Mounting Bracket Screw |
| 8 | 618176-000 | Motor Pulley |
| 9 | ✓604043-000 | Motor and Light U.S.A. 110 V. |
| | ✓604043-004 | Motor and Light - EUROPE 110/120 V. |
| | 604043-005 | Motor and Light - EUROPE 220 V. |
| | ✓604043-006 | Motor and Light - EUROPE 240 V. |
| 10 | ✓604018-000 | Machine Mounting Screw Washer |
| 11 | 604020-001 | Machine Mounting Screw |
| 12 | 604136-001 | V Belt |
| 13 | ✓604118-000 | Cords |
| 14 | ✓618597 | Foot Controller (whit lead) (618597-075 to 093) |
| 15 | ✓604055-000 | Electric System Complete |



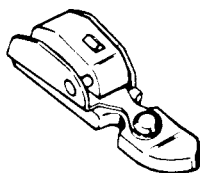
1



2



3



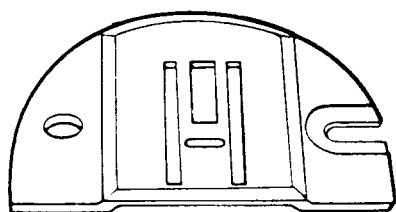
4



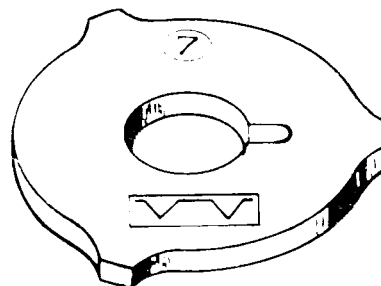
5



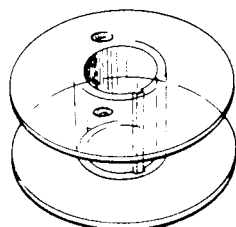
6



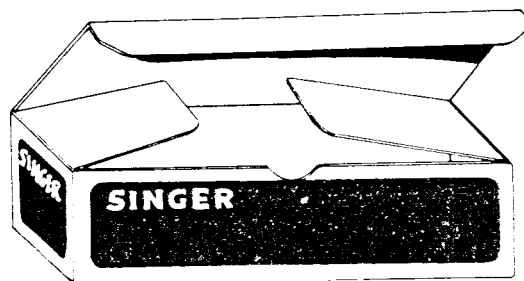
7



10



8



9

List of Accessory Parts for 258 Machine Class

| Nº | Part Nº | Part Description |
|----------------------|----------|---|
| 1 | ✓103489 | 5 - Needle Pack (with 4 Language Label) Containing: (3) Cat. 2020 (15 x 1) Needles, Size 11, 14 and 16. (2) Cat. 2045 Needles, Size 14 |
| 2 | 173571 | Arm Top Cover Spool Pin (Plastic) |
| 3 | 171498 | Presser Foot (Snap on), Special Purpose for Applique Work |
| 4 | 507836 | Presser Foot (Snap on), For Sewing Either on Right or Left Side of Needle, For Cording and Slide Fastener |
| 5 | 161963 | Blinde Stitch Guide (Not Adjustable) |
| 6 | 8879-408 | Arm Top Cover Spool Pin Washer (Felt) |
| 7 | 171285 | Darning and Embroidery Throat Plate |
| 8 | ✓173336 | Bobbins, Transparent Plastic (3) |
| 9 | 352389 | Accessory Box (Carton) |
| FASHION DISCS | | |
| 10 | 276332 | Disc No. 32 - Blindstitch (Furnished in the Machine, but Interchangeble with other Fashion Discs). |
| | 276302 | Disc No. 2 - Multistitch Zig-Zag |
| | 276305 | Disc No. 5 - Arrow head |
| | 276308 | Disc No. 8 - Solid Scallop |
| | 276309 | Disc No. 9 - Icicle |
| | 276310 | Disc No. 10 - Banner |
| | 276312 | Disc No. 12 - Walls of Troy |
| | 276313 | Disc No. 13 - Solid Diamond |
| | 276314 | Disc No. 14 - Zig-Zag Point |
| | 276319 | Disc No. 19 - Ball |
| | 276331 | Disc No. 31 - Crescent |

Recommended List of High Usage Parts for 258 Machine Class

| Nº | Part Nº | Part Description |
|----|---------|--|
| 1 | 319738 | Bobbin Winder Spindle Compl. |
| 2 | 15287 | Bobbin Winder Friction Ring |
| 3 | 37239 | Bed Slide Spring |
| 4 | ✓319863 | Thread Take-up Lever Compl. |
| 5 | 319825 | Thread Take-up Crank |
| 6 | 37930 | Needle Bar Connecting Stud |
| 7 | 44752 | Needle Bar Connecting Link |
| 8 | 37281 | Feed cam with screw |
| 9 | 37229 | Arm Shaft (Horizontal), Bevel Gear (Plastic), and Feed Lifting Eccentric, with Screw |
| 10 | 155964 | Presser Foot Shank |
| 11 | 155962 | Presser Foot Plate Compl. (Snap-on) |
| 12 | 153267 | Presser Foot Plate Compl. (Snap-on) |
| 13 | 37937 | Needle Bar Driving Arm Slide |
| 14 | 37257 | Disc Driving Gear Complete |
| 15 | 44419 | Disc Follower Position Spring |
| 16 | 37262 | Disc Follower |
| 17 | 37942 | Needle Bar Driving Arm Tension Spring |
| 18 | 66774 | Thread Take-up Spring |
| 19 | 511171 | Needle Thumb Screw |
| 20 | 37231 | Arm Shaft (Upright), Complete, with Plastic Gear |
| 21 | 44506 | Rotating Hook |
| 22 | ✓53758 | Rotating Hook Bobbin Case Compl. |
| 23 | 37977 | Rotating Hook Driving Belt |
| 24 | 319729 | Needle Clamp Complete |